

M3 ULTRAFAST®



**M3 UltraFast®**  
*Automatic Sterilizer*



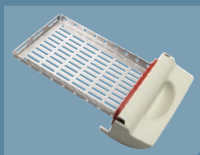
## SIMPLICITY

### Midmark M3 UltraFast® Automatic Sterilizer

Exhale...and relax. The Midmark M3 UltraFast Automatic Sterilizer is everything you need in an autoclave. Sterilize unwrapped instruments and handpieces in just 6 minutes, pouched instruments in just over 10, with the touch of a button. The M3 is easy to use with a one-step loading operation, push-button cycle selection and automatic door. Most importantly, your instruments are dry and ready to use at the end of every complete cycle. Yes...it's really that simple!

The Midmark family of sterilizers is an all-inclusive solution for your sterilization needs. And, just like the rest of the family, the M3 comes standard with the dependability and reliability that you have come to expect from the Midmark name.

When you require a simple, intelligent, fast sterilizer for your instrument processing needs, the M3 UltraFast delivers.



#### Door Tray

Simple, one-step tray operation. Lightweight, durable stainless steel. Ergonomically designed handle for balance and comfort.



#### Top Fill

Convenient access to water reservoir. Water level sensor provides intelligent system monitoring and feedback.



#### Drain Access Panel

Front reservoir drain with on-board drain tube storage is practical and time-saving.



#### Quick Reference Guide and CD




On-board user instructions and interactive training CD provide handy, instant information.



#### Condensate Tank

Traps and contains expelled steam. Quick release lid, convenient carrying handle and water level sensor for efficient, worry-free use.



Symbol	Pre-programmed Cycle	Sterilization Temperature & Pressure	Hot Cycle Time (Heat-up & Vent)	Sterilization Time	Total Hot Cycle Time	Dry Time	Total Hot Cycle Time w/ Dry
	Unwrapped	270° F 132° C 27.1 psi (186 kPa)	2.5 min.	3.5 min.	6 min.	25 min.	31 min.
	Pouches	270° F 132° C 27.1 psi (186 kPa)	5 min.	5.5 min.	10.5 min.	30 min.	40.5 min.
	Low Temp	250° F 121° C 15 psi (104 kPa)	4.5 min.	20 min.	24.5 min.	50 min.	74.5 min.

THE M3 DELIVERS WHAT YOU NEED  
IN INSTRUMENT PROCESSING.



- Sterilize instruments quickly and effectively for peace of mind
- Virtually effortless operation - one step loading, push-button start and automatic drying
- Intelligent features monitor water levels for worry-free operation
- Designed to be fast so you can slow down

The M3 and our complete line of sterilizers address all of your critical sterilization needs. Combine the capacity of the Midmark M11 with the simplicity and speed of the Midmark M3 to create the desired efficiency for your office. You'll find Midmark sterilizers are just right for your practice.

## Convenience

The M3 is real convenience. From the simple way you load and unload the tray to the thoughtful touches like the ergonomic condensate tank handle and quick-release top, the M3 is sophisticated technology that is easy to use.

## Technology

The M3 has integrated technology to inform the operator if reservoir water is low or if the condensate tank is full...eliminating the need to continually monitor water levels. Relax...we've got you covered.

## Automatic

Once one of the three pre-programmed cycles is selected, the M3 automatically sterilizes without any operator assistance. At the end of the sterilization cycle, the patented automatic door opens to begin the drying process. Simply load it, set it and forget it.

## Fast

When your practice requires instruments and handpieces to be processed quickly, the M3 delivers. Sterilize unwrapped instruments in only 6 minutes and pouched instruments in just over 10 minutes.

## Reliable

You need to feel confident that the sterilizers in your practice will function efficiently every day. As with the entire Midmark sterilizer line, the M3 is designed and built to last, successfully completing more than 100 specific product component and full product life tests.

## Dry

In accordance with CDC guidelines, instruments and packaging must be dry after a sterilization cycle and prior to handling. Chamber surface heaters remove moisture during the dry cycle, allowing the M3 to effectively dry an instrument load in as quickly as 25 minutes.



### Unwrapped

Instruments or handpieces placed on the tray; sterilized at 270°F (132°C) for a cycle time of 6 minutes.

### Pouches

Pouched or loosely wrapped instruments, handpieces or cassettes placed on the tray; sterilized at 270°F (132°C) for a cycle time of 10.5 minutes.

### Low Temp

Unwrapped, wrapped or pouched instruments, handpieces, cassettes, rubber or plastic items placed on the tray; sterilized at 250°F (121°C) for a cycle time of 24.5 minutes.

### Programmable Dry Cycle

Programmability allows the dry time to be adjusted (20 to 60 minutes) for each pre-programmed cycle.

### LCD Display

Indicates cycle selected, exposure time, temperature and pressure. When the cycle enters sterilization mode, remaining time is displayed as well as temperature and pressure.

### Start

Initiates selected cycle.

### Stop

Terminates selected cycle or function.

## Specifications

M3	
Overall length w/plug:	22" (55.9 cm)
Overall width:	17.8" (45.2 cm)
Overall height:	6.9" (17.5 cm)
Countertop area:	24" (61 cm) D x 22" (55.9 cm) W
Chamber:	12.1" (30.7 cm) L x 7.6" (19.3 cm) W x 1.6" (4.1 cm) H 0.49 gal. (1.8 liters) usable volume
Tray:	11.75" (29.8 cm) L x 7.25" (18.4 cm) W x 1" (2.5 cm) H Holds the Hu-Friedy® Signa-Stat Cassette (6.5" x 10.5" x 1.25")
Unit weight:	71 lbs. (32.2 kg)
Unit weight with water:	80 lbs. (36.3 kg)
Shipping weight:	80 lbs. (36.3 kg)
Reservoir capacity:	1.2 gal. (4.5 liters)
Electrical Requirements:	115 VAC, 50/60 Hz, 12 Amp Single Phase 230 VAC, 50/60 Hz, 6 Amp Single Phase Heater Power: 1400 watts Maximum Power Consumption: 1400 watts UL Listed to U.S. & Canadian Standards ASME Boiler & Pressure Vessel Code, Section VIII, Division 1 Canadian Registration Number available UL 61010-1, 2nd Edition IEC 61010-2-040, 1st Edition CAN/CSA-C22.2 No. 61010-1 2nd Edition FCC Part 15, Sub-part B A separate (dedicated) circuit is recommended for this sterilizer.
Installation:	Use on a level, water-resistant surface. For proper air circulation, allow a minimum of 2" (5 cm) clearance on sides and top; 4" (10 cm) clearance behind. Allow proper clearance for access to the reservoir fill port located on top of the sterilizer. Also, allow 14" height clearance for condensate tank.



Midmark M11, M9 and M3 Automatic Sterilizers



M550, M250 and M150 Soniclean® Ultrasonic Cleaners

Midmark is an ISO 13485 and ISO 9001 Certified Company. For more information or a demonstration, contact your Midmark dealer or Call: 1-800-MIDMARK Fax: 1-877-725-6495 Outside the U.S.A. Call: 1-937-526-3662 Fax: 1-937-526-8214 or visit our website at midmark.com

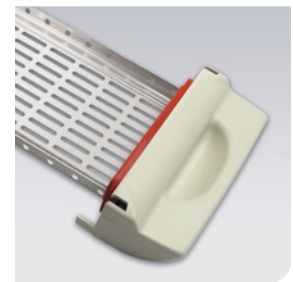
© 2009 Midmark Corporation  
60 Vista Drive P.O. Box 286 Versailles, Ohio 45380-0286  
Products subject to improvement changes without notice  
Litho in U.S.A. 007-0638-00 Rev. A1 (8/09)

## Accessories



### Top Cover Protector

Use the cover protector to shield the M3 top from scratches or damage.  
9A404001



### Door Tray

Additional door trays allow higher efficiency instrument processing.  
9A402001



### Printer

The stand-alone printer is optimal for mechanical monitoring of each cycle.  
9A401001



Because we care.